

TURBOTEST®

Laboratory agitator | emulsifier

MIXING SOLUTIONS
FOR COSMETIC,
PHARMACEUTICAL
AND CHEMICAL
INDUSTRIES

Develop your
formulations in the
laboratory

Validate your
processes
for industrial scale-up



YOUR REQUIREMENTS

- Successfully develop new products
- Develop various formulations according to the type of mixture
- Handle your laboratory equipment easily and safely
- Carry out tests, optimize your processes and analyze your results
- Efficiently develop your formulations to implement your industrial transpositions

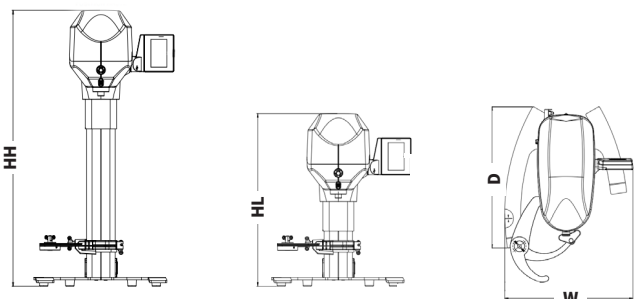
OUR SOLUTIONS

-  Bench-top agitator covering a wide range of container volumes
-  Variety of turbines and containers for versatility of formulations
-  Ergonomic design for easy installation, setting and cleaning
-  Intuitive touchscreen interface for formulation development
-  Reproducibility of process parameters for scale-up operations



TURBOTEST®

Laboratory agitator | emulsifier



Model represented : Turbotest®Up

Type	TURBOTEST®	TURBOTEST®Up	
Dimensions	HH (high position)	848,5 mm	948,5 mm
	HL (low position)	598,5mm	
	W	480 mm	
	D	529mm	
Useful stroke of the tool	250mm (+/- 5mm)	350mm (+/- 5mm)	
Weight	26 kg		

Go further with the Turbotest®Up

- Ergonomic control thanks to two options to lift the head: on the foot and via the touchscreen.
- Maximum height amplitude to set up large containers easily
- 3 user modes for more versatility: Manual, 3 Speeds, Programming (up to 100 formulations of 20 phases)
- Tool selection for the formulation. Display and save tool's working position for increased accuracy.
- Traceability of process parameters and display of curves for real-time monitoring. Data acquisition and export via USB key.
- Connectable temperature probe and data feedback on the HMI. Probe holder included.



Main features

- Capacities: 0.25 to 20 liters
- Container diameter: 50 to 300mm
- ABS housing, anodized aluminum column, 304L stainless steel feet
- Stainless steel beaker holder with removable silicone pads
- Power: 0.4 kW
- Voltage: Turbotest®: 220V – 50 Hz
Turbotest®Up: 110/220V – 60/50Hz
- Speed: 5 to 4,000 rpm
- Tiltable touchscreen interface. Display of speeds, times, tools.
- Control of the lift via the HMI (Turbotest®) and on the foot (Turbotest®Up)



Consult the Turbines documentation to choose your mixing tool

Contact us:

Ytron-Quadro (UK) Ltd
Unit D Chiltern Commerce Centre
Asheridge Road
Chesham, Bucks
HP5 2PY

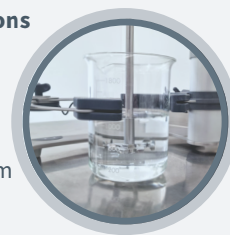
T: +44 1494 792 898
E: sales@ytron-quadro.co.uk
W: www.ytron-quadro.co.uk



EFFICIENT PROCESSING

of your laboratory formulations

- Range of high-performance mixing and stirring tools
- Wide range of capacities up to 20 liters
- Rotation speed amplitude up to 4000 rpm



VERSATILITY OF APPLICATIONS

- Diversity of available tools: radial flow turbines, axial flow propellers, rotor/stator emulsifiers...
- Easy and quick installation of mixing tools
- Use of a variety of beakers and containers: water bath, boiler, lift table, hot plate...



ERGONOMICS AND SAFETY

- Quick installation on bench
- Asymmetrical feet for better accessibility of the mixing area
- Easy clamping system for beakers and other containers
- Removable beaker holder pads and smooth surfaces for easy cleaning
- Silent electric head lift
- Beaker and tool position detection system



PROCESS CONTROL AND REPEATABILITY

- Intuitive touchscreen user interface
- Manual mode to validate your formulations and set process parameters
- 3 speed mode for a quick launch with saved key parameters
- Display of the tool's working position
- Customization of acceleration ramps according to the viscosity of the product



INDUSTRIAL TRANSPOSITION

- Transposition of the mixing parameters on the whole laboratory range (250 ml to 50 liters)
- Design and process parameters consistent with the pilot (Ultralab and Trilab) and production range



Ytron-Quadro (UK) Ltd
Unit D Chiltern Commerce Centre
Asheridge Road
Chesham, Bucks
HP5 2PY

T: +44 1494 792 898
E: sales@ytron-quadro.co.uk
W: www.ytron-quadro.co.uk



A company of LINXIS GROUP